

DESCRIZIONE

Dptinal

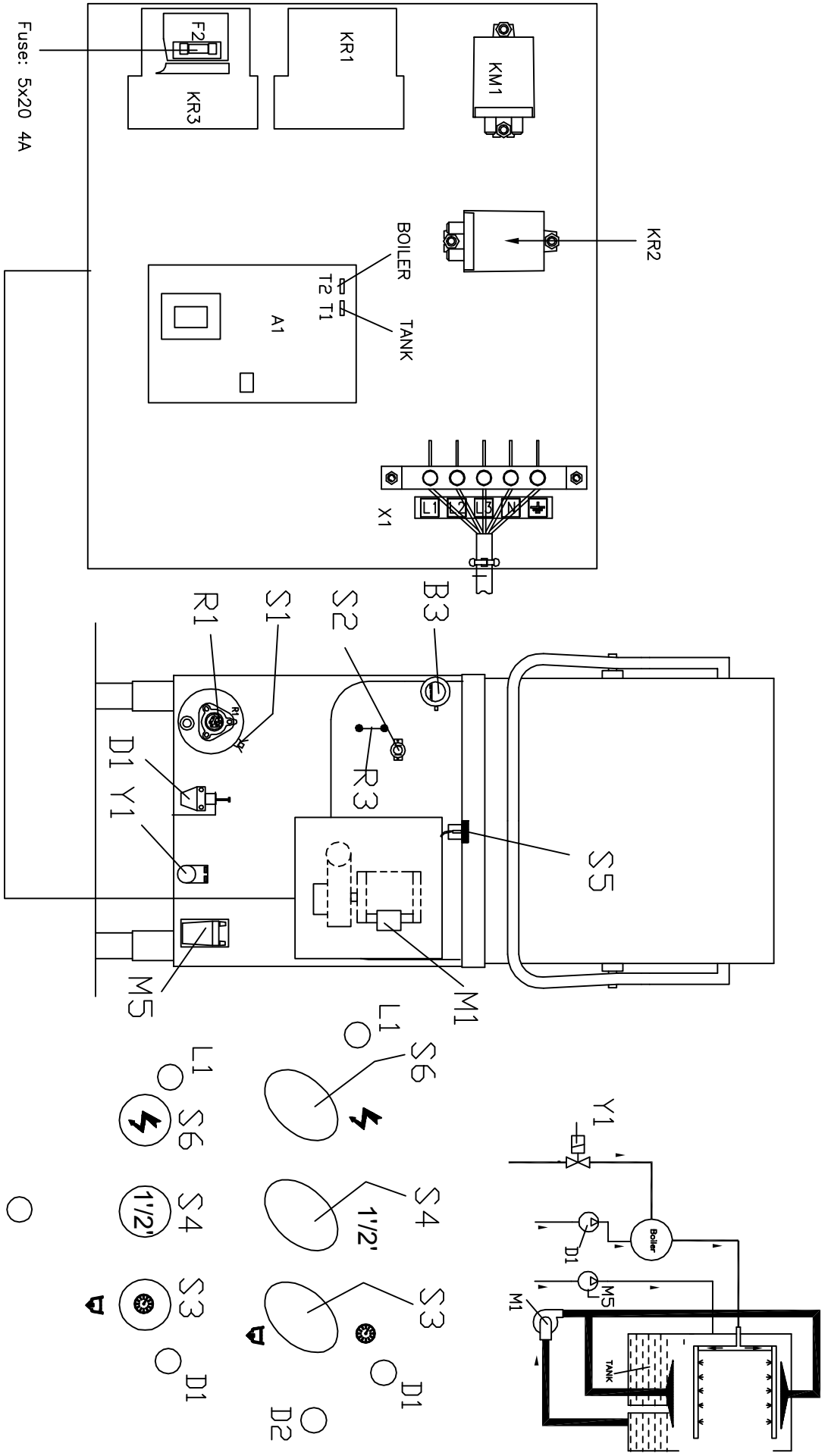
SUBSTITUISCE

DATA

Code Machine	date	15/02/05
re-examined	date	
inspected by	date	
validated by	date	

denominazione		Code
WIRING DIAGRAM		
Dishwashers	total BLOC	3
	N° BLOC	1
	Next BLOC	-2

n°/file mod
81412



DESCRIZIONE

SUBSTITUISCE

DATA

Code Machine		denomination		Codice	
re-examined	date/date	WIRING DIAGRAM		n°/file	mod
inspected by	date/date	Dispatchers		81412	--
validated by	date/date	total Blatt	N° Blatt	Next Blatt	
		3	2	-3	

	01	02	03	04	05	06	07	08	09	10	11	12	13	14	15	16	17	18
A	S6	PULSANTE DI LINEA	INTERRUPTEUR DE LIGNE															
	S5	MAIN SWITCH	NETZSCHALTER															
	S5	MICROINTERRUTTORE MAGNETICO	MICROINTERRUPTEUR MAGNETIQUE															
	S3	MAGNETIC SAFETY MICROSWITCH	MAGNETISCHER SICHERHEITSSCHALTER															
	S3	INTERRUTTORE DI CICLO	INTERRUPTEUR DE DEMARRAGE															
	S3	CYCLE SWITCH	WASCHVORGANGSSCHALTER															
	S4	SELETORE CICLO	SELECTEUR CYCLE															
	S4	CYCLE COMMUTATOR	WAHLSCHALTER FÜR WASCHVORGANGSDAUER															
	S2	TERMOSTATO SICUREZZA BOILER	THERMOSTAT DE SÛRTE SÛRTE															
	S2	SAFETY BOOSTER HEATER THERMOSTAT	SICHERHEITZUNG															
	S1	TERMOSTATO SICUREZZA VASCA	THERMOSTAT DE SÛRTE SÛRTE															
	S1	SAFETY TANK HEATER THERMOSTAT	SICHERHEITS-TANKTHERMOSTAT															
	R2	RESISTENZA VASCA LAVAGGIO	RESISTANCE CUVE DE LAVAGE															
	R2	WASH TANK HEATING ELEMENT	WASCHTANKHEIZUNG															
	R1	RESISTENZA BOILER	RESISTANCE BOYLER															
	R1	BOOSTER HEATER HEATING ELEMENT	BOILERHEIZUNG															
	M3	ELETTROPOMPA SCARICO																
	M3	DRAIN PUMP																
	M2	ELETTROPOMPA AUMENTO PRESSIONE	ELECTROPOMPE AUGMENT PRESSION															
	M2	RINSE BOOSTER PUMP	DRUCKSTÄRKERUNGSPUMPE															
	M5	ELETTRODOSATORE DETERGIVO	DOSEUR EL. DETERGENT															
	M1	EL. DETERGENT INJECTOR	SPEUL MITTELDOSEGERÄT															
	M1	ELETTROPOMPA LAVAGGIO	ELECTROPOMPE LAVAGE															
	M1	WASH ELECTRIC PUMP	ELEKTRISCHE UMWELZPUMPE															
	L1	LAMPADA SPA DI LINEA																
	L1	CYCLE PILOT LAMP																
	KR1	TELEUTTORE SICUREZZA RESISTENZA BOILER	CONTACTEUR RESISTANCE BOYLER															
	KR1	SAFETY BOOSTER HEATER CONTACTOR	LEITSCHUTZ F. BOILERHEIZUNG															
	KR2	TELEUTTORE RESISTENZA BOILER	CONTACTEUR RESISTANCE BOYLER															
	KR2	BOOSTER HEATER CONTACTOR	LEITSCHUTZ F. BOILERHEIZUNG															
	KM1	TELEUTTORE ELETTROPOMPA LAVAGGIO	CONTACTEUR ELECTROPOMPE LAVAGE															
	KM1	WASCH PUMP CONTACTEUR	SCHUTZ F. UMWELZPUMPE															
	Y1	ELETTROVALVOIA RISCACQUO	ELECTROVANNE DE RINÇAGE															
	Y1	RINSE SOLENOID VALVE	MAGNETVENT FÜR NACHSPÜELUNG															
	D1	LAMPADA SPA DI CICLO	NETZKONTROLLAMPE															
	D1	CYCLE PILOT LAMP																
	D2	LAMPADA SPA MACCHINA PRONTA	TEMON MACHINE PRETE A L'EMPLOY															
	D2	MACHINE READY PILOT LAMP	MACHINE BETRIEBBEREIT-KONTROLLAMPE															
	C1	CONDENSATORE	KONDENSATOR															
	C1	CAPACITOUR																
	B2	SONDA CONTROLLO BOILER	THERMOSTAT RESISTANCE BOYLER															
	B2	BOOSTER HEATER THERMOSTAT	BOILERHEIZUNG															
	B3	PRESSOSTATO LIVELLO VASCA	PRESSOSTAT NIVEAU AIRGAP															
	B3	TANK PRESSURE SWITCH	TANKDRUCKSCHALTER-NIVEAUREGLER															
	B1	SONDA CONTROLLO VASCA	THERMOSTAT RESISTANCE CUVE															
	B1	PROBE TANK HEATER	TANKHEIZUNG/THERMOSTAT															
	A1	SCHEDA CONTROLLO	FICHE DE CONTROL/ELECTRONIQUE															
	A1	ELECTRONIC CONTROL UNIT	ELEKTRONISCHE BEDIENTISKSÄRTE															
	SMB:	DESCRIZIONE	DESCRIPTION															
		DESCRIPTION	BESCHREIBUNG															
			HW															
			81395															

DESCRIZIONE

SUSTITUISCE

DATA

code Machine	Re-examined	date	derivation	Code
Inspected by	date	15/02/05	WIRING DIAGRAM	n°/file
Disassembled by	date		3	81412
total Duct	N° Duct	Next Duct	1	--
			-2	